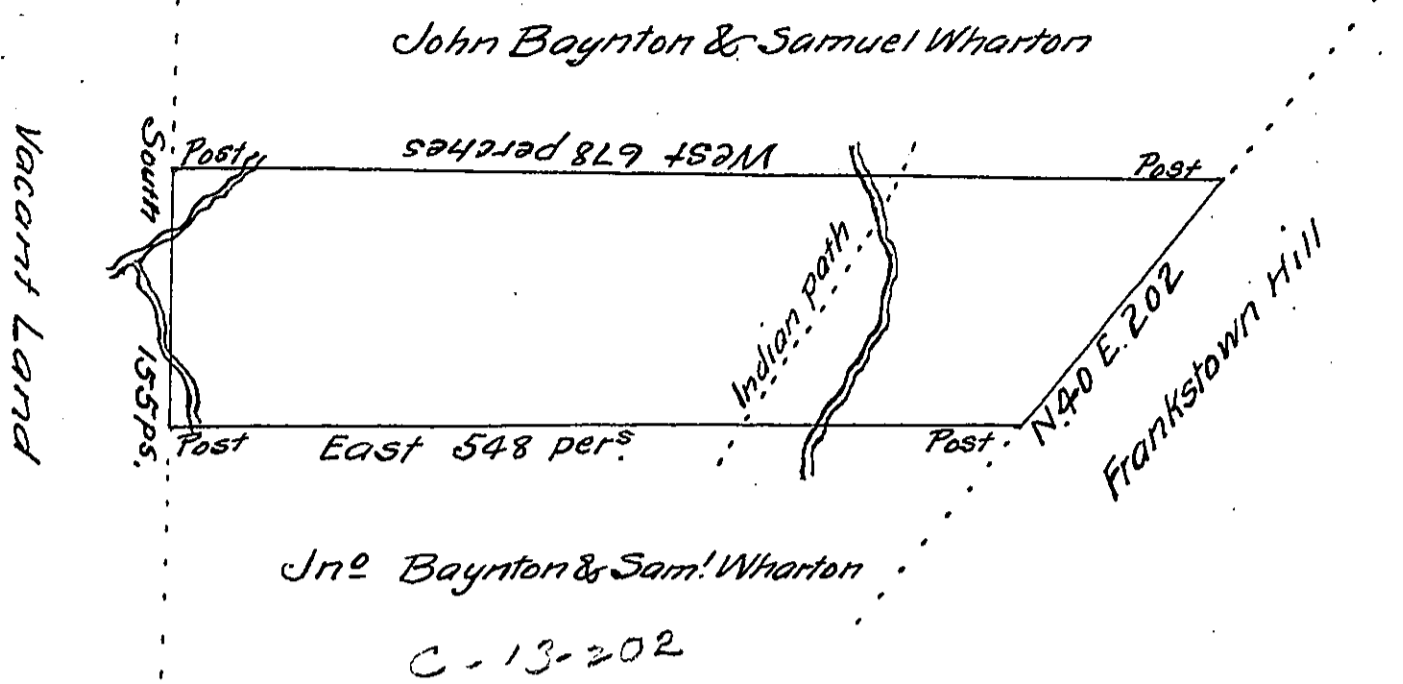


C-6 200



A Draught of a tract of Land situate on the two runs and on the Indian path leading to Sasquahannah in the County of Cumberland called the Hickory Bottom containing Five hundred and sixty - acres and the usual allowance of six acres per^s for Roads & ca. Surveyed for John Baynton & Samuel Wharton in pursuance of a warrant dated the 28th July 1766.

P Richard Tea Dep^y Survey^r

To John Lukens Esq^r Survey^r Gen^l

IN TESTIMONY that the above is a copy of the original remaining on file in the Department of Internal Affairs of Pennsylvania, made conformably to an Act of Assembly approved the 16th day of February, 1833, I have hereunto set my Hand and caused the Seal of said Department to be affixed at Harrisburg, this fourteenth day of October 1911

Henry Horck
Secretary of Internal Affairs.